



**SCREEN**  
*Sensation*®

## **INSTRUCTION** MANUAL



**Welcome to the  
Screen Sensation®  
Compact Home  
Screen Printing kit.**

**For ideas, inspiration, tutorials, hints and  
tips please visit:**

**[www.screensensation.com](http://www.screensensation.com)**



## **Introducing the brand new Screen Sensation® Compact.**

The perfect way to create beautifully screen printed projects from the comfort of your own home with professional results everytime.

Easily and quickly create stunning home decor projects, custom fabric prints, craft projects and so much more.

Go on, create something sensational!

The kit features everything you need to start screen printing at home today!

### **Kit contains:**

- **Screen Sensation® Compact**
- **Screen Sensation® Frame**
- **Screen Sensation® Squeegee**
- **Screen Sensation® Palette Knife**
- **1 x Pre Designed Screen Design**

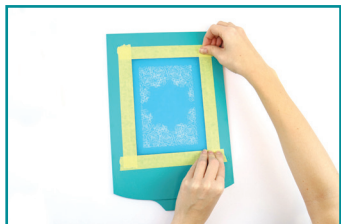
**The only limitation is your imagination!**

# INSTRUCTIONS



## STEP 1:

Use your Screen Sensation® Tape to secure the top edge of the Mesh design to your Frame.



## STEP 2:

Secure the remaining edges ensuring that the mesh is flat and as tight as you can make it. After securing the mesh insert the screen into the lid of the unit.



## STEP 3:

Secure your chosen medium to the grid base of the Screen Sensation® Compact using your tape, ensuring the medium is flat.



## STEP 4:

Use your Palette Knife to transfer your ink to the top of the screen mesh. Try to create an even line across the top.



### STEP 5:

Use your Screen Sensation® Compact Squeegee to draw the ink down from the top across the mesh design evenly.



### STEP 6:

Raise the hinged lid of the Screen Sensation® Compact to reveal your printed design.

## Tips & Techniques

If your chosen mesh design has details which reach further down the mesh than others, apply more ink above those details to ensure the ink reaches the bottom of the design.

Draw the Squeegee down the screen using a little pressure with the Squeegee angled towards you at about 30 degrees. If you find your resulting image has run or bled, try using less ink or altering the Squeegee angle.

Screen design for illustration purposes only.

# COLOUR THEORY



## PRIMARY COLOURS

**T**he primary colours are the foundation of creating all other colours. These can be used directly or mixed in different quantities to create different colours and tones.



## SECONDARY COLOURS

**S**econdary colours are created by combining any 2 of the primary colours in equal parts.

Red + Yellow = Orange

Yellow + Blue = Green

Blue + Red = Purple



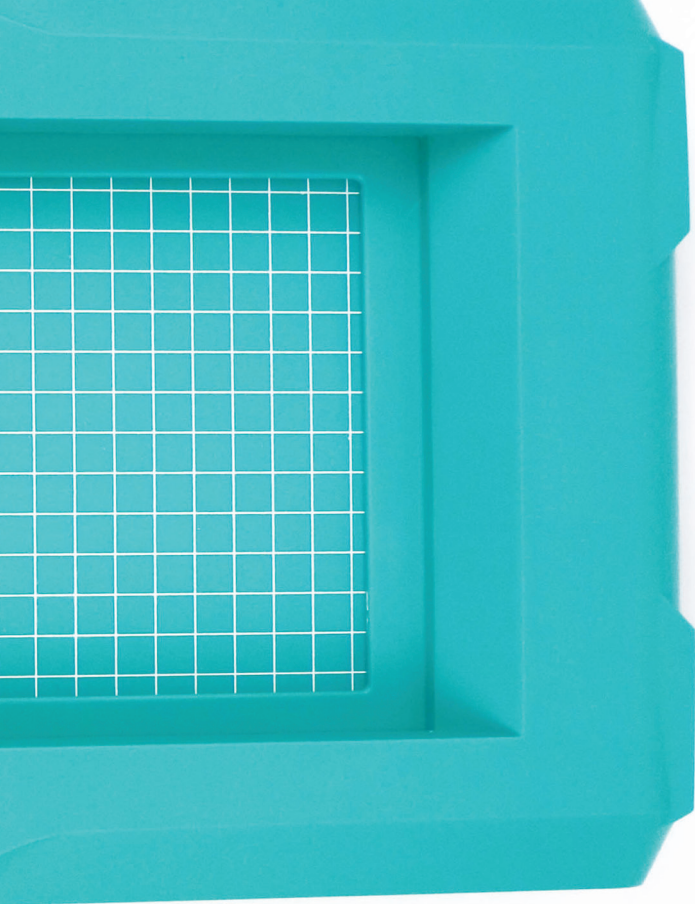
## TERTIARY COLOURS

**T**o create the next set of colours or "Tertiary" colours, combine a primary and it's nearest secondary colour. For example, combining red and purple creates a deeper or redder purple.

**B**y following these simple steps you have the possibility to create an infinite range of colours. You can expand the colour wheel further by combining secondary and tertiary colours.

Adding black and white to these colours will also darken or lighten the colours you have mixed. Using extender will also make the ink more translucent.

There are an infinite amount of colour possibilities to create and the Screen Sensation® Compact Home Screen Printing Kit is all about fun and creativity, so why not experiment to find out what you can create with a little imagination!



**SCREEN**  
*Sensation®*

©Craft Channel Productions Ltd.  
EU Distributor Address: S45 9HX  
All rights reserved.